



Smart Solutions for Today's Geoscientist



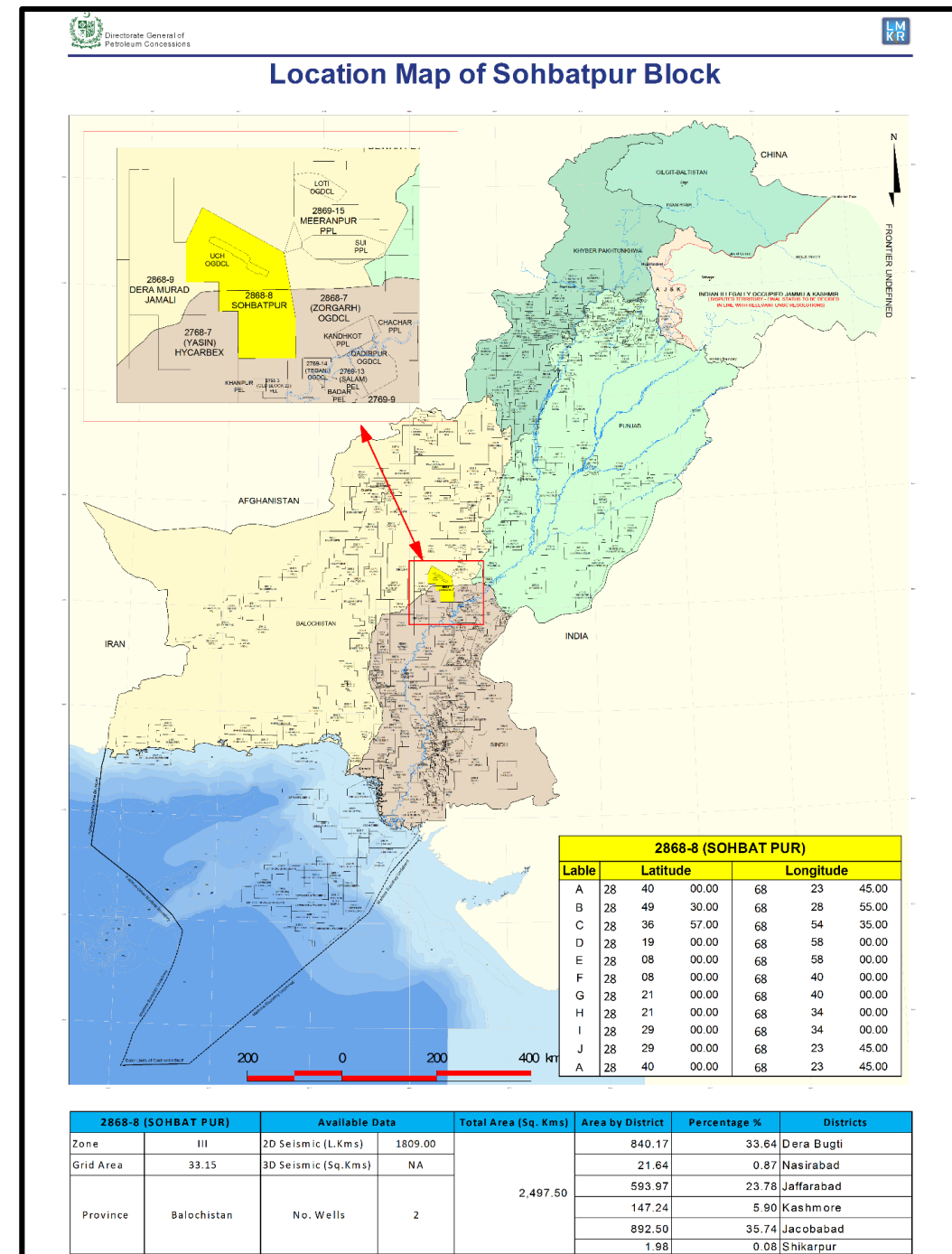
BLOCK: SOHBAT PUR (2868-8)

ONSHORE BLOCK BIDDING ROUND 2024

MINISTRY OF ENERGY PETROLEUM DIVISION (DGPC)

Introduction

- SOHBAT PUR Block covers an area of 2,497.50 Sq. Kms.
- Geological Basin: Central Indus Basin, Pakistan.
- The block falls in Prospectivity Zone III.
- OMV, HYC, PPL, MGCL, OGDCL, PKP-GHA, AMOCO acquired approximately 1831.20 L. Kms of 2D seismic data in the block within the years 1975, 1978, 1986, 1989, 1991, 1992, 1995, 1996, 1997, 1999, 2000, 2007, 2015, 2016, 2017 and 2019.
- The Block is surrounded by Zorghar(East), Zin(North), and Yasin(West) blocks.
- The wells drilled in the vicinity includes UCH Deep-01, UCH Deep-1A, UCH-01.

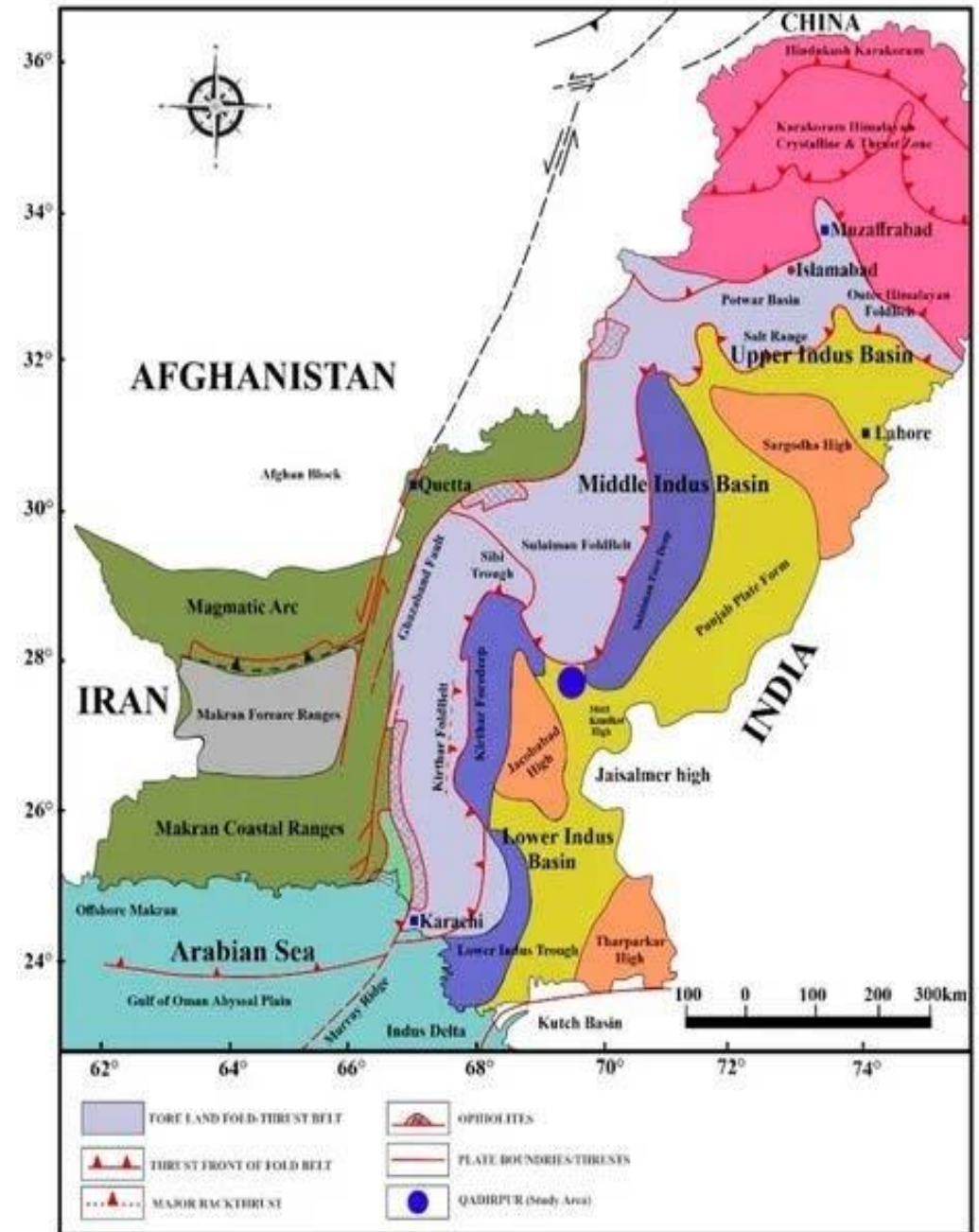


Geological History

Central Indus Basin may be divided into following broad tectonic divisions from east to west:

- Punjab Platform
- Sulaiman Depression
- Sulaiman Fold Belt

The Sulaiman Foredeep/Depression is a broad syncline with a very gentle, undisturbed eastern limb & steeper western limb. The eastern limb has monoclinical dips & over 200 km wide. The western flank of the depression includes Zindapir Inner Folded Zone while Murri Bugti Inner Folded Zone lies in the South, to the East it merges in Punjab platform. The depth of the basement beneath this syncline is about 8 km (Kadri, 1995) .



Petroleum System

Source Rock:

- The Sember Shale, the Mughalkot Shale, and the Ranikot Shale are the source rocks in the area for the respective geological eras.

Reservoir Rock:

- The Pirkoh and Habib Rahi Limestones represent secondary reservoirs, whereas the Sui Main Limestone as well as the Sui Upper Limestone are the primary reservoirs and produces of gas in nearby producing fields, respectively.


Seal:

- The seal rocks comprise Ghazij Shale, Drazinda Shale, and Sirki Shale.


Trap:

- Both structural and stratigraphic traps are present.


Age	Form	Member	source	Depth	Lithology		Hydrocarbon occurrences		
					West	East			
PLIOCENE	Upper	Swalik Group	SWALIK						
OLIGOCENE		NARI	NARI					MARI QADIRPUR SUI, KANDHKOT QADIRPUR, SUI KADHKOT, SURI SUI, UCH KANDHKOT QADIRPUR, KANORA KHAIRPUR, SURI LOTI, BADAR MAZARANI	
EOCENE	Middle Upper	Kirihar	ORAZINDA		1000				
			PIPKOH						
			SIRKI						
			HABIB RAHI						
EOCENE	Lower	Leki	GHAZU SHALE						
			SUI UPPER						
			SUI SHALE						
			SUI MAIN						
PALAEOCENE		Ranikot	DUNGHAN					SURI, Mehar	
			UPPER RANIKOT						
			LOWER RANIKOT						
CRETACEOUS	Upper	Pab	PAB		2000			SAWAN KANDANWARI MIANO KANDHKOT, 20 BOBI, MARI DEEP GAMBAT DULIAN SARA	
		Mughal kot	Mughal Kot						
	Middle	Parh	PARH						
	Lower	GORU	UPPER GURU			3000			
			LOWER	GS30					
			GS20						
	Sembar	SEMBAR							
JURASSIC	MIDDLE	CHILTAN	CHILTAN		4000				




Sandstone, Shale and Conglomerate




Shale and Sandstone




Limestone and Shale



Limestone

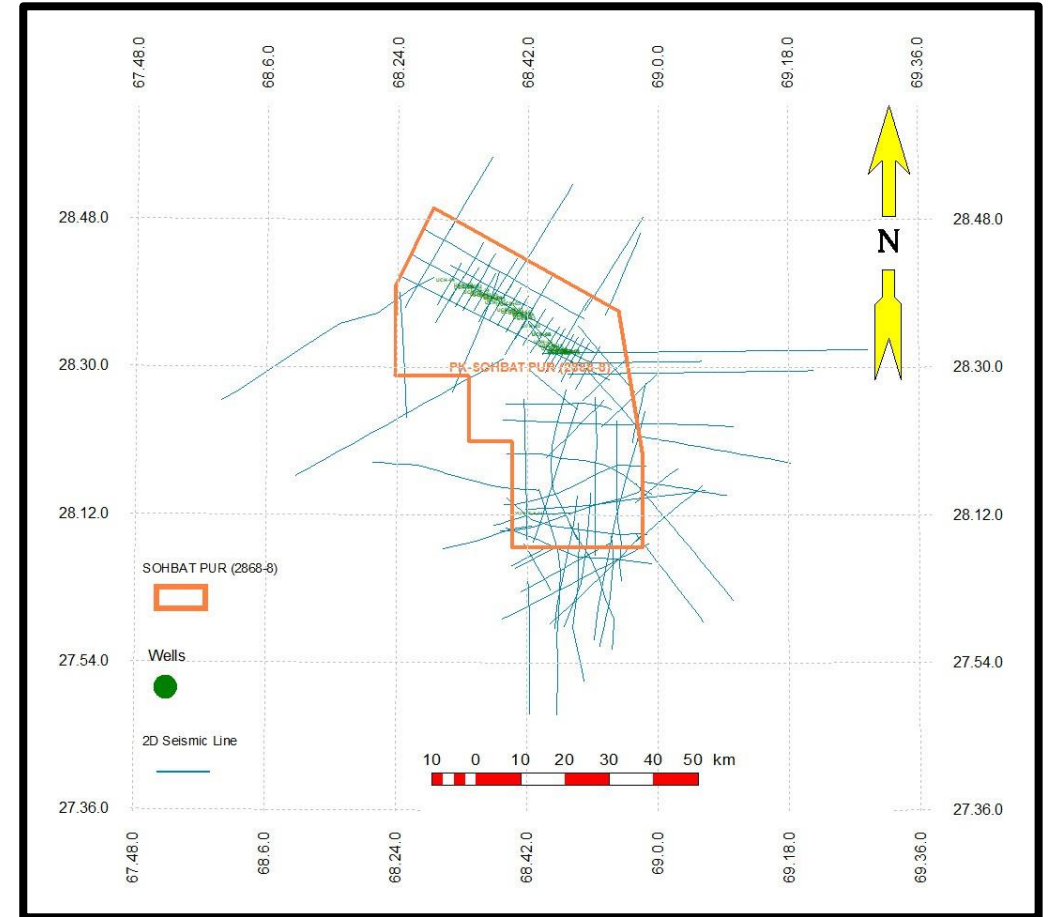
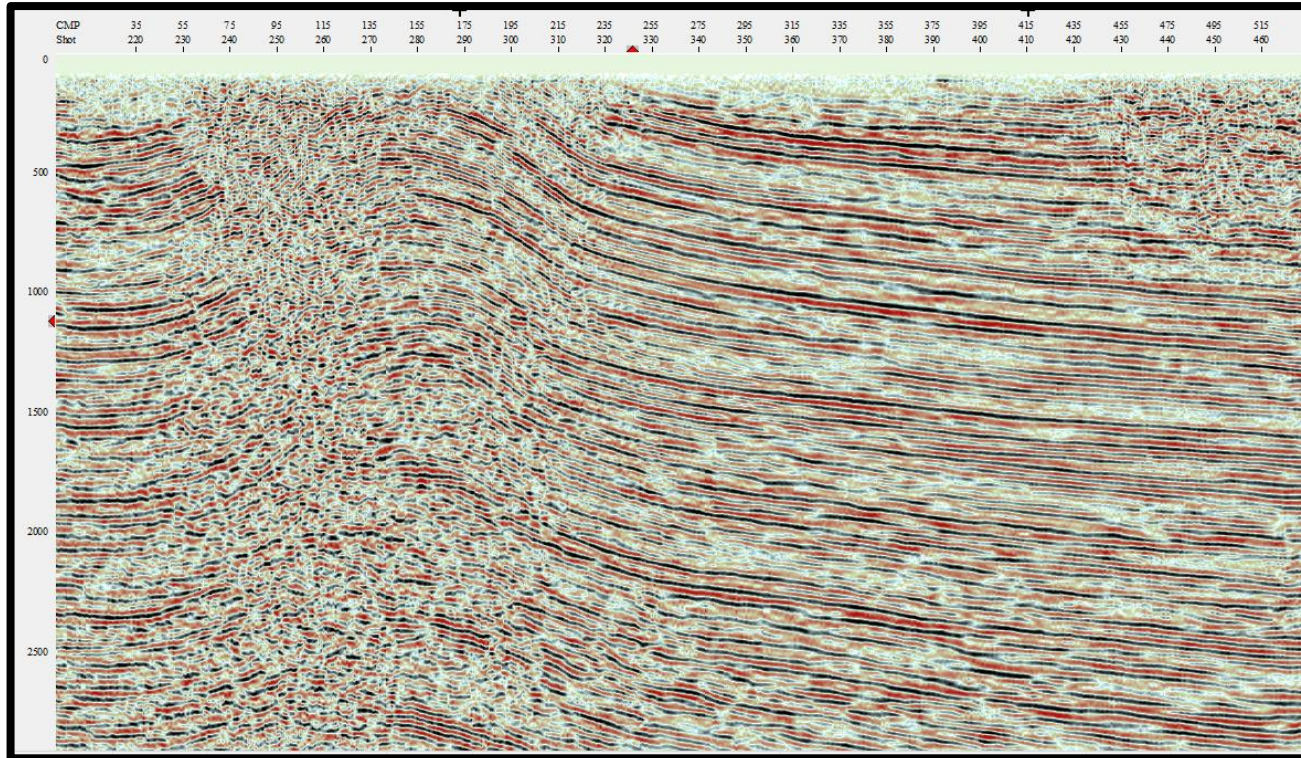


Shale with Interbedded Sandstone



Shale and Marl

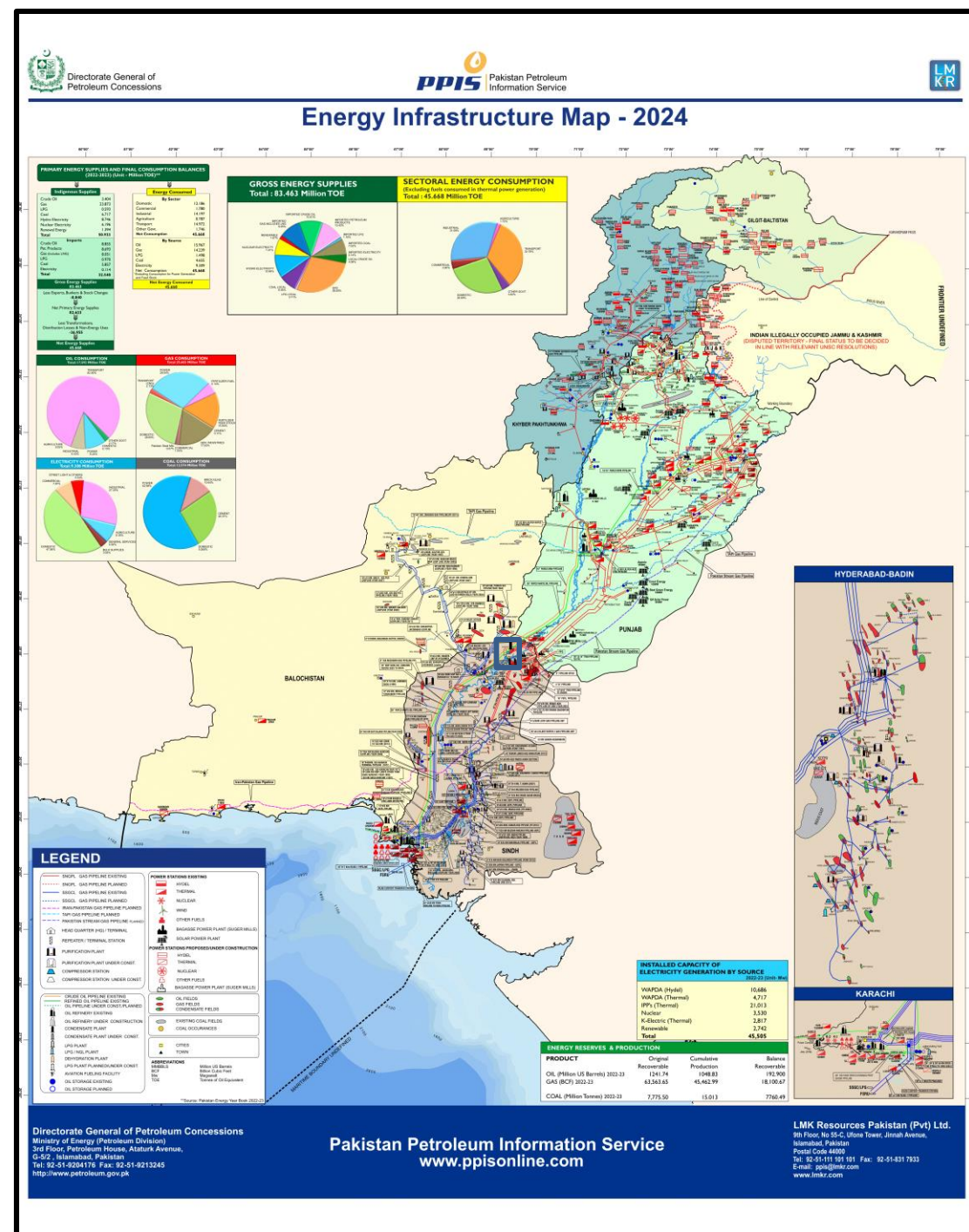
Prospectivity



- High resolution seismic data can allow to delineate true potential of the block.

Infrastructure Map

- Government support to companies for infrastructure development.
- Gas fields exist near the block.
- SSGCL gas pipeline exists within the block.
- Purification plant exists within the block.
- Thermal power plant exists near the block.
- Oil storage exist near the block.



Investment Benefits

- Low risk, high reward.
- Prolific gas discovery in the basin.
- High cost on infrastructure development within limited timeframe.
- Return on Investment within 3 years.
- Attractive government policies for foreign investors.
- Excellent purchase rate set by the Government against the discovered commodity.
- Government will guarantee to buy the gas or oil discovered.
- Attractive price in case of tight gas discovery.

Block Summary

Item	Indicators
Probable multiple sources in the region	Positive Indicator
Discoveries in Geological Basin	Positive Indicator
Nearby Infrastructure	Positive Indicator
ROI in 3 Years	Positive Indicator

THANK YOU

