



Smart Solutions for Today's Geoscientist



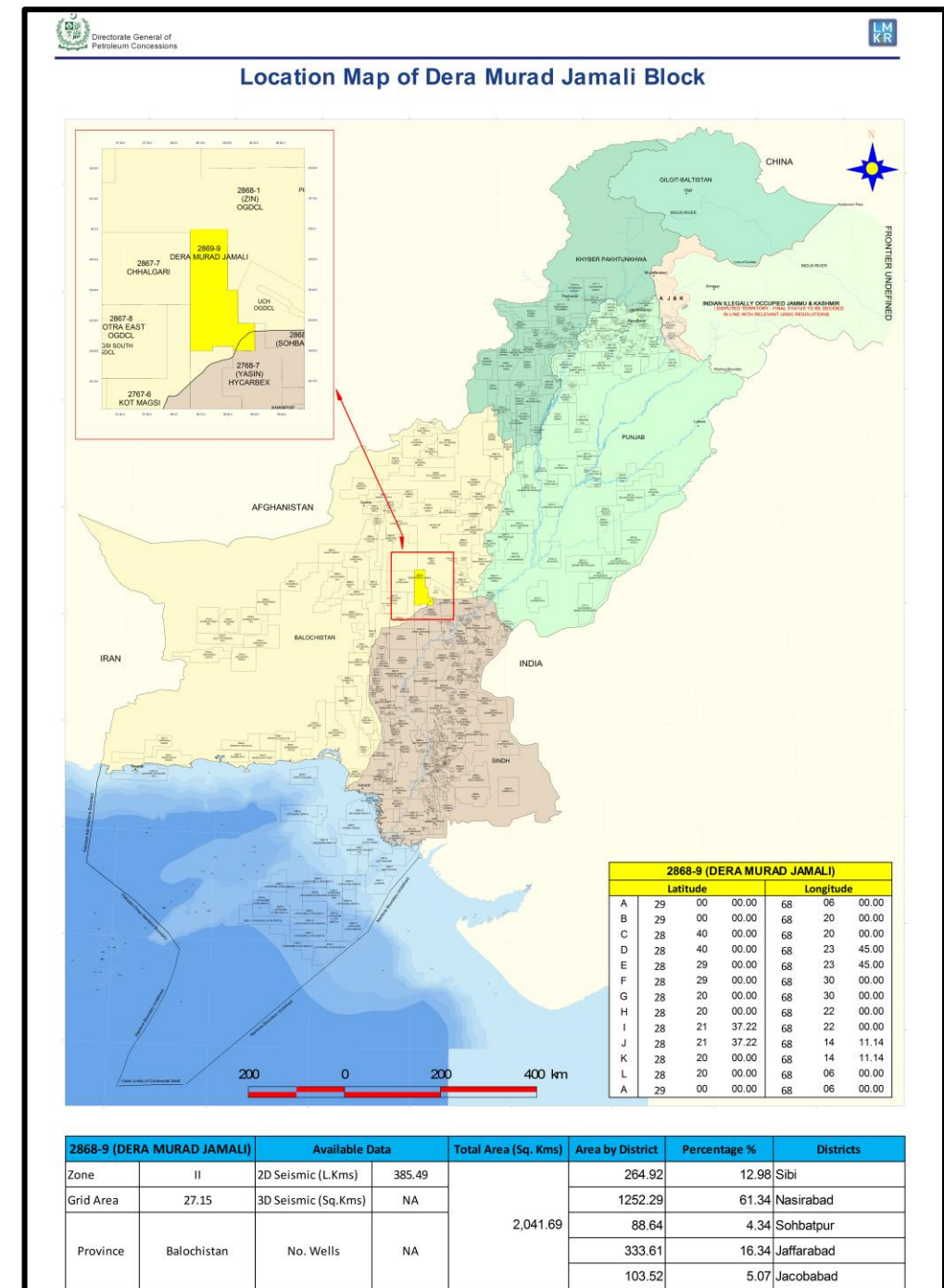
BLOCK: DERA MURAD JAMALI(2868-9)

ONSHORE BLOCK BIDDING ROUND 2025

MINISTRY OF ENERGY PETROLEUM DIVISION (DGPC)

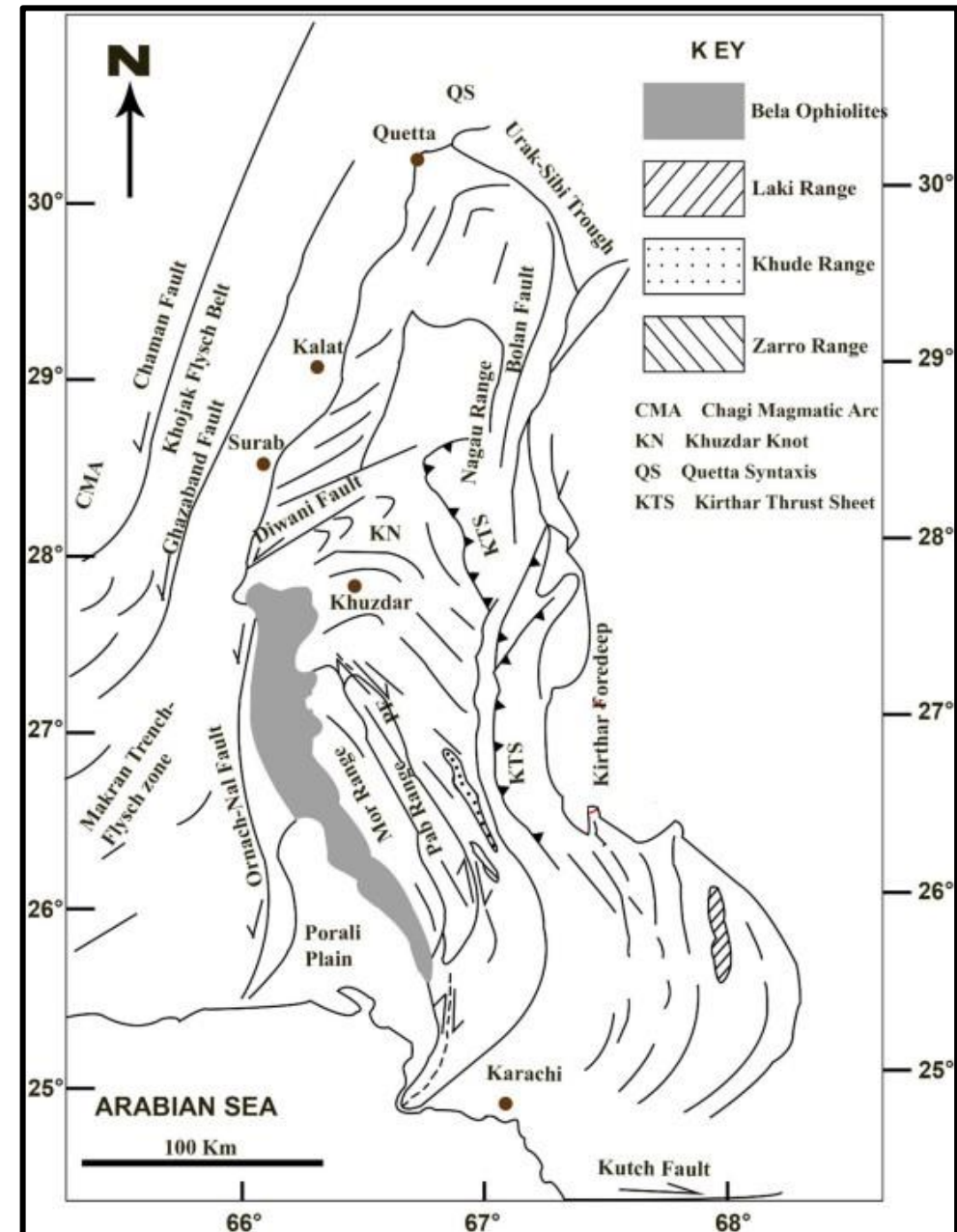
Introduction

- Dera Murad Jamali Block covers an area of 2,282.09 sq km.
- Location: Bolan, Nasirabad, Jaffarabad and Jacobabad district, Balochistan, Pakistan.
- Geological Basin: Kirthar Fold belt, Pakistan.
- The block falls in Prospectivity Zone II.
- Estimated Resources of the Lower Indus Basin:
 - Oil: 4740 million barrels
 - Gas: 64.75 trillion cubic feet
- Hycarbex and Amoco Acquired some 2D of about 385.9 L.Kms data in block within the years 1978 and 1997.
- The Block is surrounded by Sohbatpur, Zin, Yasin (East), Sibi (North), New Larkana (South) and Chhalgari , Kotra East (West).
- The wells drilled in the block are:
 - Jacobabad-01 & 02, Jhatpat-01.
- Major discoveries in the surrounding is from Morgandh X-01, Jhal Magsi South & Uch Gas fields.



Geological Map

- The collision of Indian and Eurasian plates resulted in the creation of north–south trending Kirthar Fold Belt (KFB) in the Southern Indus Basin.
- The basin is comprised of five structural elements units, i.e., Kirthar Fold Belt, Kirthar Foredeep, Karachi Trough, Thar Platform, and Offshore Indus.
- The present study area belongs to the western portion of Kirthar Foredeep, which is located between the Kirthar Foldbelt and Thar Platform.
- In the north of Kirthar Foredeep, Jacobabad Mari Kandkot high is present. It is bounded in the south by the Hyderabad high and in the east by the Tharpakar high in the west by KFB Bela Ophiolite.



Petroleum System

Source Rock:

- The Cretaceous Sembar shale are considered to be the main source rock in this area.

Reservoir Rock:

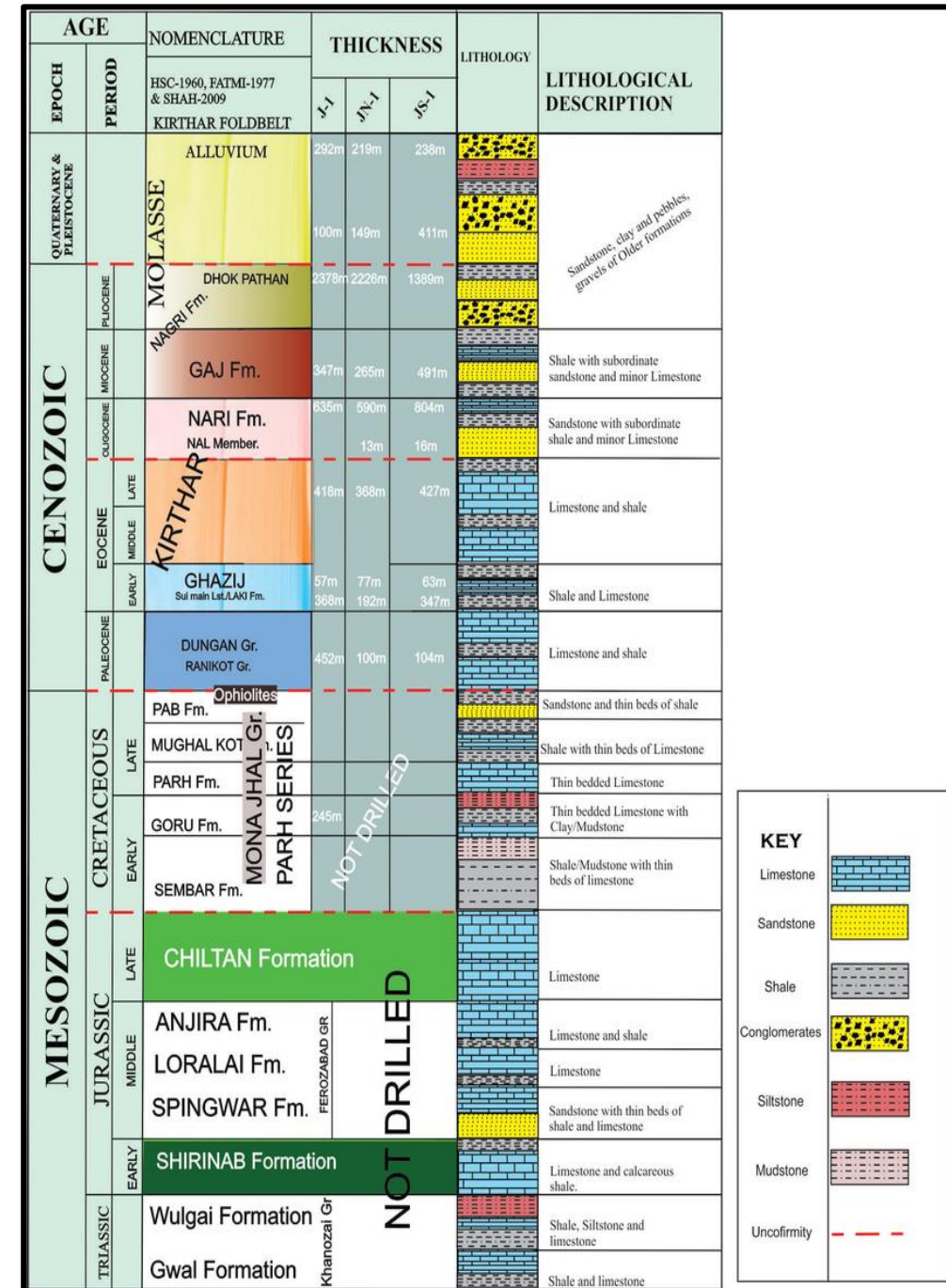
- Mughalkot (Upper Cretaceous), Pab sandstone (Upper Cretaceous), Sui main Limestone (Eocene) and Lower Goru sands (Early Cretaceous) with a porosity of 5 to 30 % act as major reservoir in Lower Indus Basin.

Seal:

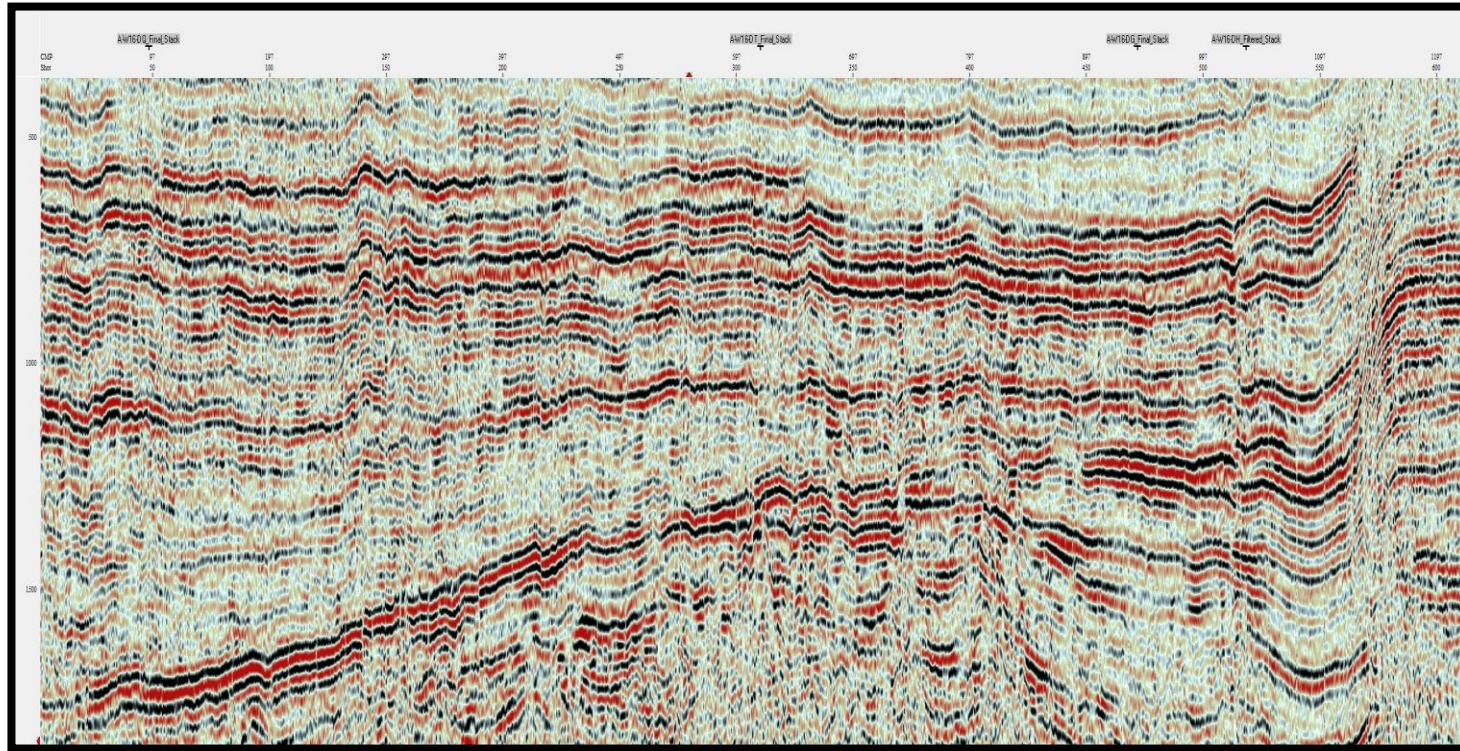
- The Upper Goru marls and Ghazij shales act as seal for major reservoirs.

Trap:

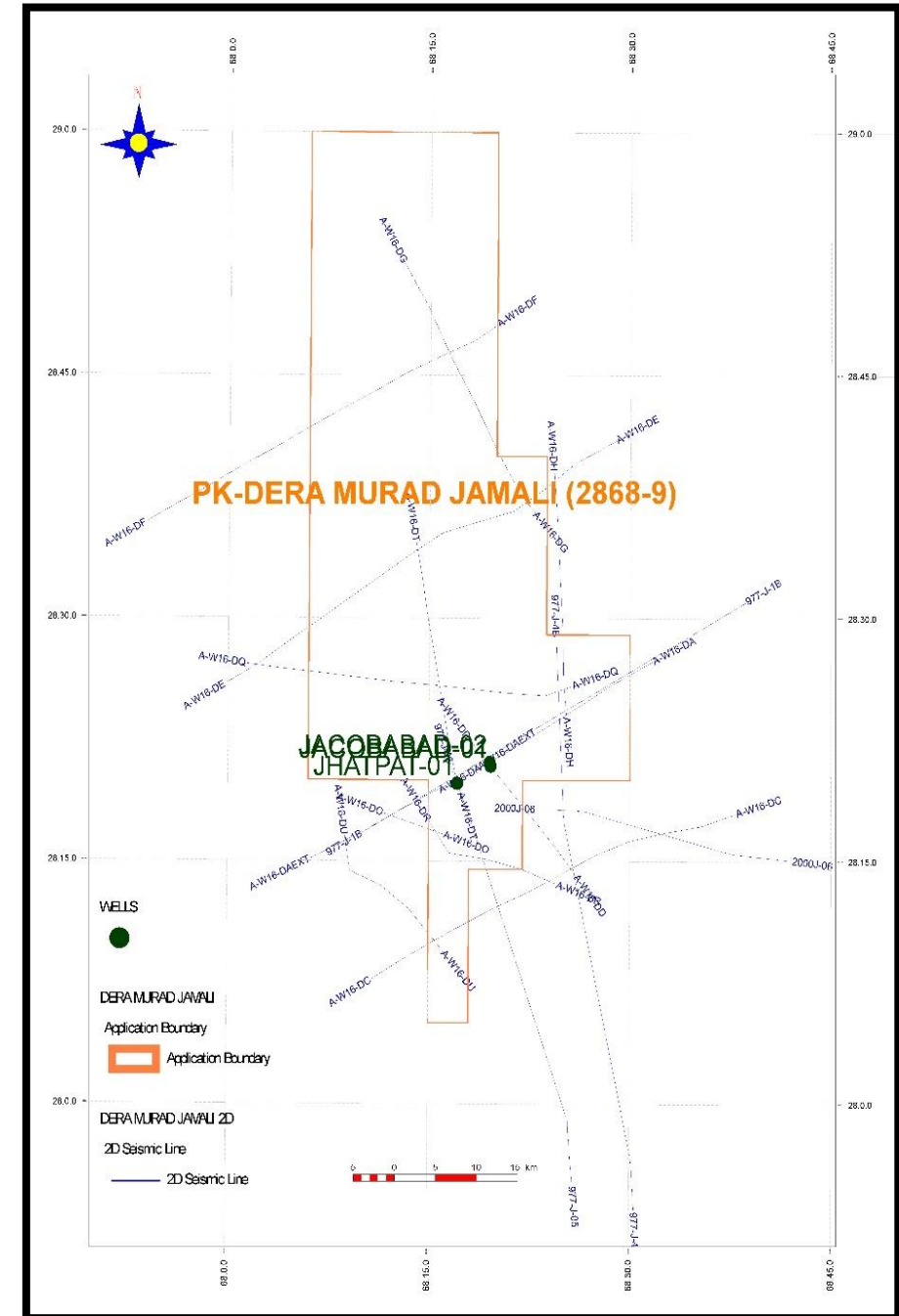
- Anticlinal traps associated with thrust faults are more common in the area.



Prospectivity

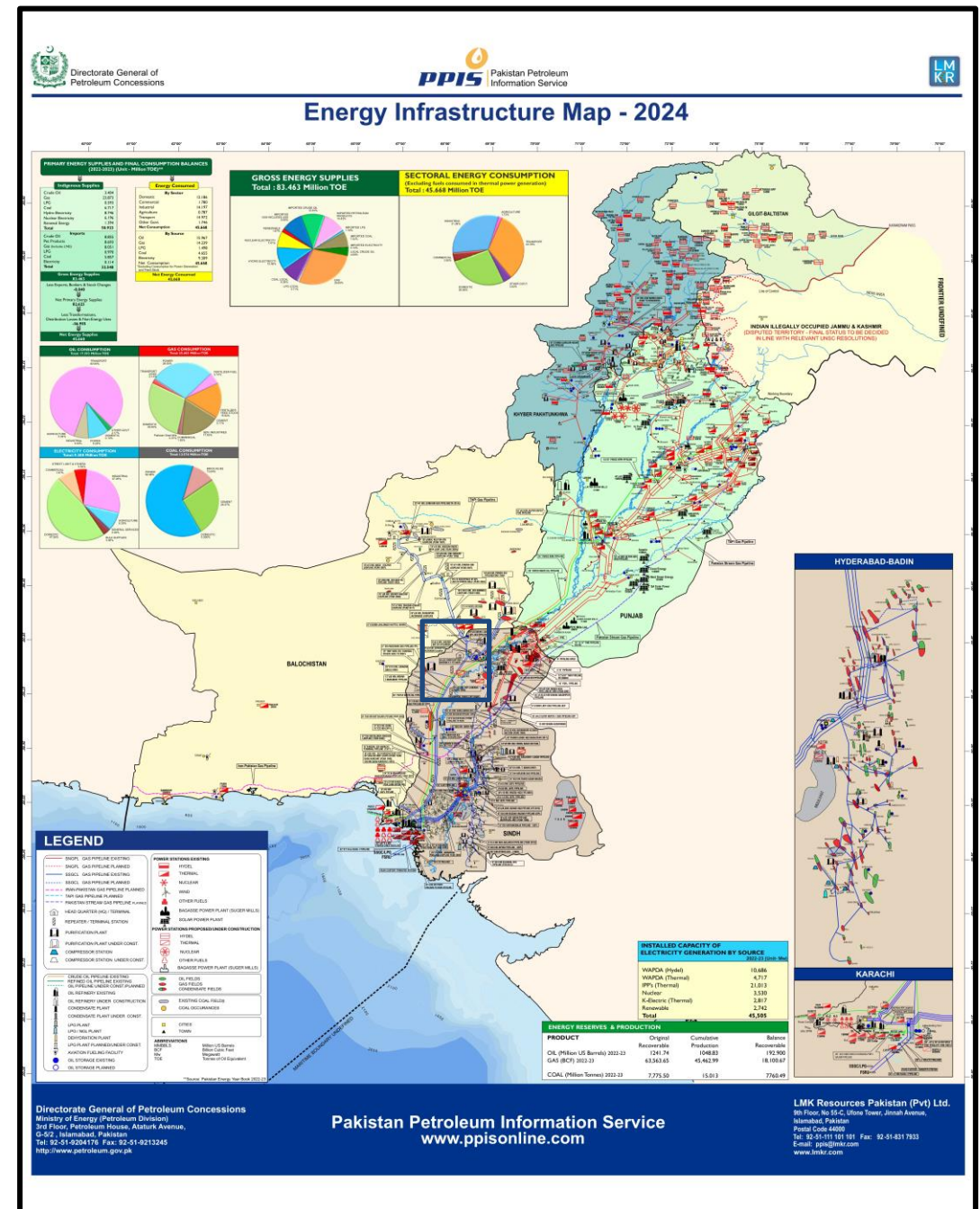


- The main trapping mechanism in this area is considered to be anticlines associated with thrust faults.
- In recent past, nearby blocks have successful gas discoveries
- High resolution seismic data can allow to delineate true potential of the block.



Infrastructure Map

- Nearest infrastructure gas pipeline is available South-West of the block.
- 18-24" gas pipeline infrastructures are present in the region.
- Thermal power stations are also present in near vicinity.
- Uch gas field is close to this block, which is a producing gas field.
- Government support to companies for infrastructure development



Investment Benefits

- Low risk, high reward.
- Major gas discoveries present in the geographic province
- Low cost on infrastructure development within limited timeframe
- Return on Investment within 3 years
- Attractive government policies for foreign investors
- Excellent purchase rate set by the Government against the discovered commodity
- Government will Guarantee to buy the gas.
- Attractive price in case of tight gas discovery.

Block Summary

Item	Indicators
Proven multiple sources in the region	Positive Indicator
Nearby discoveries	Positive Indicator
Nearby Infrastructure	Positive Indicator
ROI in 3 Years	Positive Indicator

THANK YOU

